

# TRIUMPH®

## 1138

The 1138 Trimmer features a resharpenable Solingen steel blade set and an automatic safety guard made from unbreakable plastic. With a manual clamp, adjustable back gauge, and solid all-metal construction, it ensures precise, safe operation.



**A ERGONOMIC HANDLE**  
The specially designed handle offers enhanced comfort and safety during operation.

**B MANUAL CLAMP**  
With this solid manual clamping device a variable clamp pressure can be applied depending on the material to be cut.

**C PRECISE LOCKABLE BACK GAUGE**  
For Accuracy Lockable back gauge provides precise and consistent paper alignment for accurate and reliable cutting results.

**D BLADE MOUNT**  
The solid cast aluminum blade mount features double pivot bearings for smooth and stable blade operation.

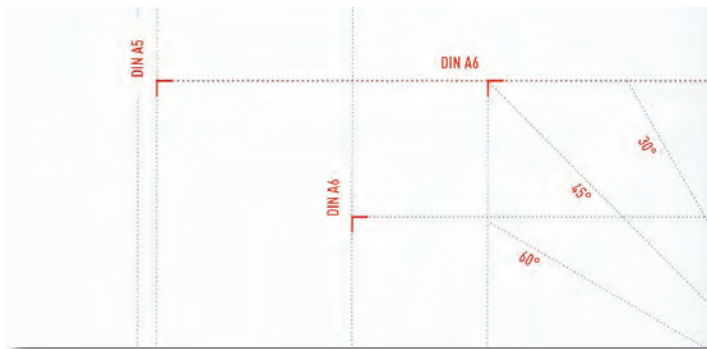
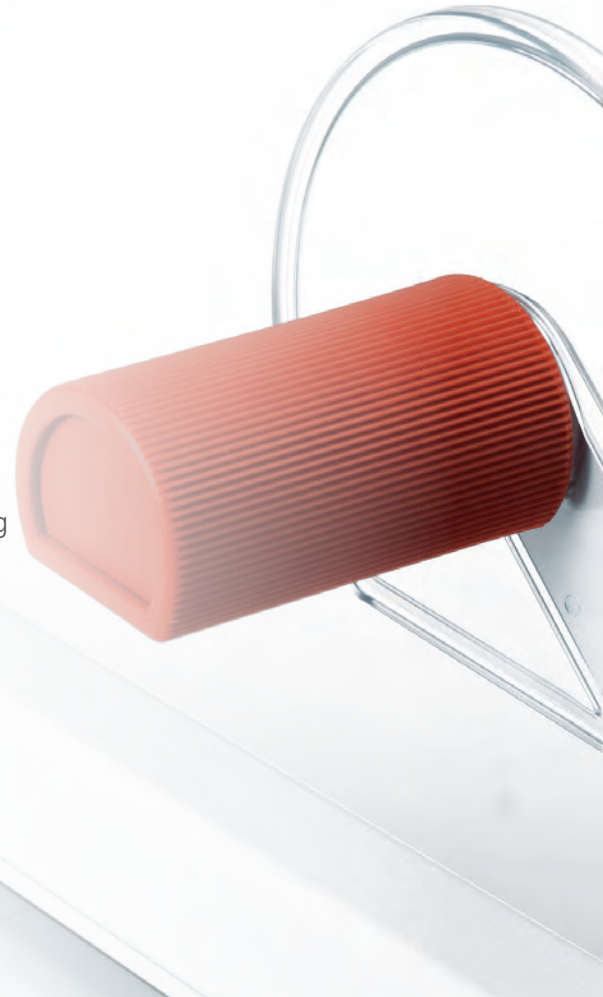
www.mbmcorp.com  
843-552-2700



# TRIUMPH®

# 1138

- Tabletop trimmer designed for high-precision and reliable cutting
- Resharpenable Solingen steel blade set for long-lasting sharpness and performance
- Solid manual clamp allows adjustable pressure for secure paper holding
- Precision side guides with inch and metric scales for accurate measurements
- Adjustable back gauge ensures customizable and precise paper positioning
- Cast aluminum blade mounting bracket with double pivot bearings for smooth operation
- All-metal construction for durability and stability during heavy use
- Transparent, unbreakable automatic safety guard that moves with the blade for user protection
- Non-skid rubber feet provide stability and safe operation



## Format Indications

For efficient and easy cutting, standard paper sizes and various angle indications are printed on the table top.



## Steel Blade

German Solingen steel blades are self-sharpening and can be re-sharpened for continued accuracy.

## Specifications:

Cutting length	15"	Dimensions (D x W x H)	22 1/2" x 16" x 10"
Sheet capacity	50*	Shipping weight	29 lbs
Table size (D x W)	16" x 14"		

\* May vary due to variations in paper and power supply

www.mbmcorp.com  
843-552-2700 