



Unique "Pillar Post" design provides quick blade changes for multi-material cutting.



One of our most highly versatile wall-mounted cutters.

When space is an issue, it helps to have a highly versatile material cutter. One machine that can perform the functions of several, with equal accuracy and reliability. The 3100 cuts substrates including:

- Matboard
- Glass
- Hardboard
- Acrylic
- Foamboard
- Aluminum Sheets
- Corrugated Plastics

The Fletcher 3100 is our most versatile wall-mounted cutting machine. The 3100 cuts through the most challenging materials with ease and accuracy.

The 3100 also features a unique, spring-loaded cutting assembly with interchange-

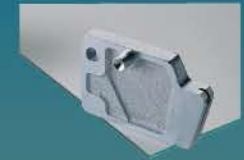
able pillar posts. That way, you can apply exactly the right tool to each cutting surface. Plus, you can change from one pillar post to another in a matter of seconds...no tools required.

- Patented breakout device makes completing the score in acrylics clean and simple
- Full-length clamp (not to be used on glass) provides non-slip cutting and leaves no marks
- Composite sleeve bushings reduce friction and enhance cutting performance
- Minimal assembly required
- Comes with one measuring stop for consistent production sizing

For complete purchase package information visit our website at www.fletcher-terry.com



Pillar Post for cutting gatorfoam, foamboard and matboard up to 1/2" (12mm) thick.



Pillar Post for scoring glass up to 1/4" (6mm) thick.



Pillar Post for cutting hardboard up to 3/32" (3mm) thick. Cuts from both the front and back.



Pillar Post for scoring plastics, acrylics and other "fracture" sensitive materials up to 1/4" (6mm) thick.

