



Electric Premium Comb Binder

Galaxy e 500



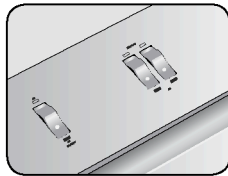
Please read these instructions before use.

Veillez lire ces instructions avant d'utiliser l'appareil.

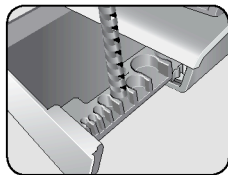
Lea estas instrucciones antes del uso.

fellowes.com

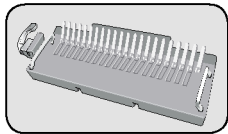
ENGLISH



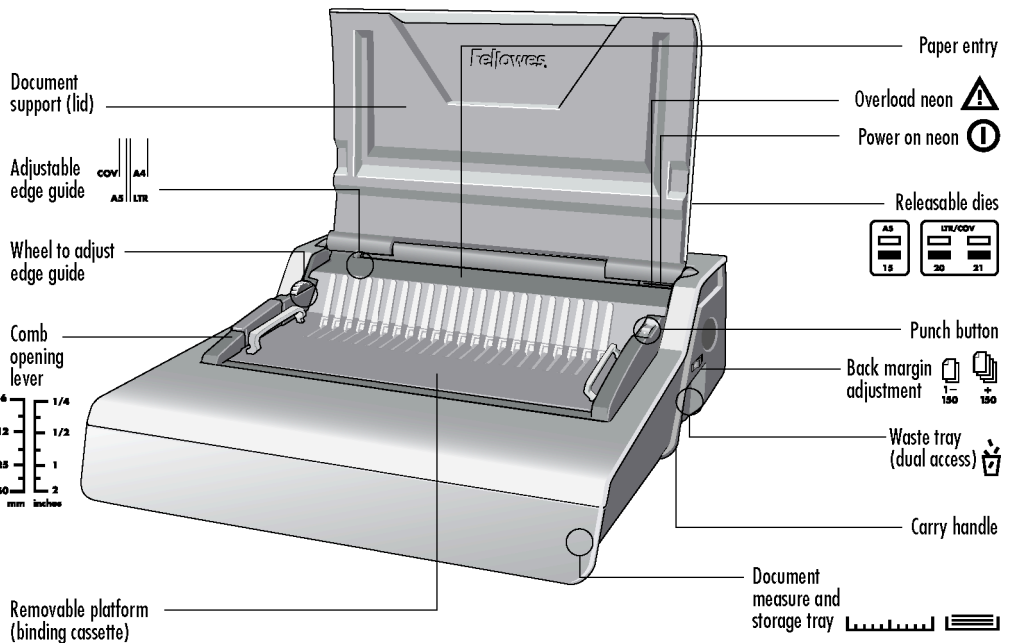
Releasable dies



Comb storage and Document measure



Removable platform (binding cassette)



CAPABILITIES

Punching Capacity

Paper sheets	
70-80g / 20lb	25 sheet
Transparent Covers	
100-200 micron / 4-8 mil	4 sheet
200+ micron / 8+ mil	3 sheet
Other Standard Covers	
160-270g / 40-60lb	4 sheet
270+g / 60+ lb	3 sheet
Binding Capacity	
Max comb size	2"/51mm
Max document (80g / 20lb)	c. 500 sheet

Technical Data

Paper dimensions	A4, A5, US letter, US cover
Punching slots	21
Releasable dies	3 dies (15, 20, 21)
Adjustable back margin	yes - 2 positions (min = .098"/2.5mm, max = .179"/4.5mm)
Slot pitch	9/16" / 14.28mm
Adjustable edge guide	yes- rotary
Waste tray capacity	c. 3000 sheets
Voltage	120V 60 Hz
Motor wattage	160W 0.8A
Duty Cycle	30 mins on / 30 mins off
Net weight	9.8 kg / 21.6 lb
Dimensions (LxDxH)	20.9" x 17.7" x 6.5" / 530 x 450 x 165mm

IMPORTANT SAFETY INSTRUCTIONS — Read Before Using!



Please read before use. Please keep for future reference

When punching;

- always ensure the machine is on a stable surface
- test punch scrap sheets and set the machine before punching final documents
- remove staples and other metal articles prior to punching
- never exceed the machines quoted performance

When binding;

- the removable binding platform can be used away from the punch unit
- always ensure the removable binding platform is on a stable surface

Keep the machine away from heat and water sources.





Never attempt to open or otherwise repair the machine.

Plug the machine into an easily accessible socket.

Note - this machine features a thermal cut-out device which activates when the machine is overheated during use. It will automatically reset when the machine is safe to operate.

COMB DIAMETER & DOCUMENT SIZES

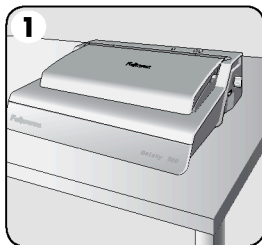
Comb diameter sizes

			Set back margin
mm	inch	number of sheets	
6mm	1/4"	2-20	 1-150
8mm	5/16"	21-40	
10mm	3/8"	41-55	
12mm	1/2"	56-90	
16mm	5/8"	91-120	
18mm	11/16"	121-150	
22mm	7/8"	151-180	 +150
25mm	1"	181-200	
32mm	1 1/4"	201-240	
38mm	1 1/2"	241-340	
45mm	1 3/4"	341-410	
51mm	2"	411-500	

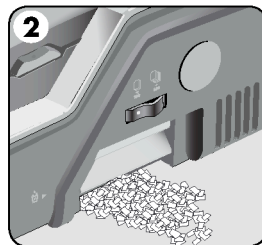
Need Help?

Customer Service... www.fellowes.com
Let our experts help you with a solution.
Always call Fellowes before contacting your place of purchase.

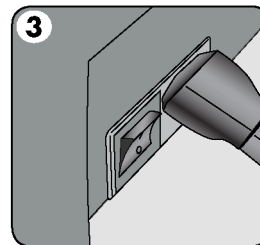
SET UP



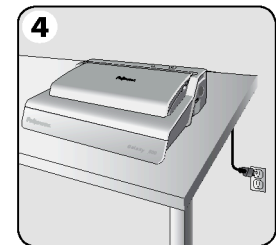
1. Ensure the machine is on a stable surface.



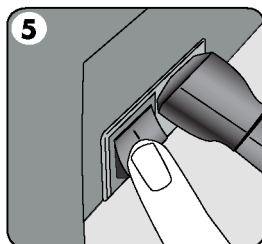
2. Check waste tray is empty and correctly fitted. The tray can be accessed from the left and right sides. The tray has a 'burst feature' that operates when the chip tray is 'over-full'.



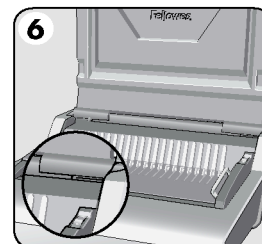
3. The machine is supplied with loose power leads. Select the correct lead for appropriate power supply.



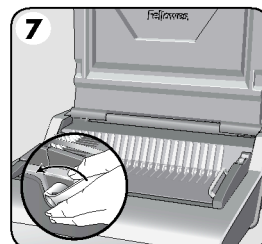
4. Plug the lead into grounded socket outlet.



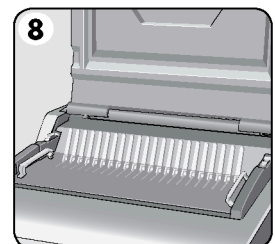
5. Switch the machine on (located at the rear of the machine).



6. Lift the lid. Check the green power neon is on.



7. Ensure the comb-opening lever is pushed backwards.

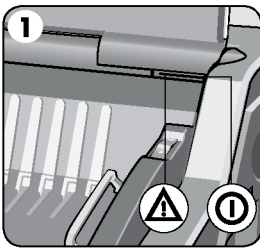


8. Ensure the binding platform is located correctly in the machine

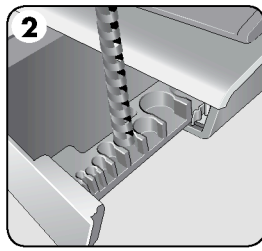


ENGLISH

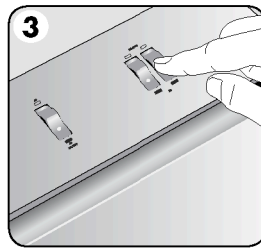
STEPS TO BIND



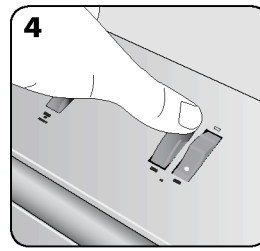
1. Check the green power neon is on.



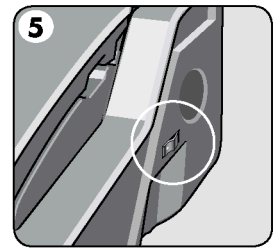
2. Select the correct comb diameter using the storage tray.



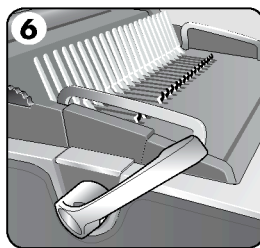
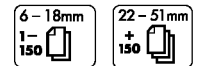
3. Select the correct punch profile for the sheet size. Select releasable dies as appropriate (holes 15, 20, 21).



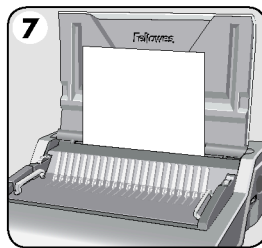
4. To cancel a punch, press the switch down at the back. Test punch a sheet.



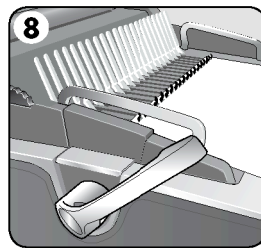
5. Select the correct back margin depth for number of sheets.



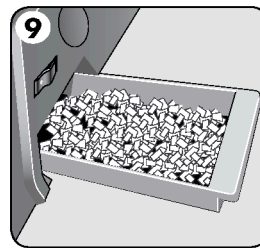
6. Insert the plastic comb into the opening mechanism. Pull comb-opening lever forward to open the comb.



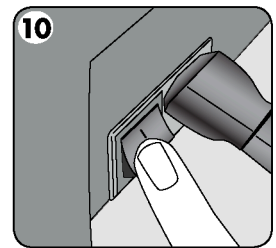
7. Test punch scrap sheets to check edge guide setting.



8. Load punched sheets directly onto the open comb.

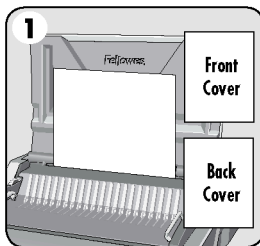


9. Empty waste tray regularly - ideally after each use.

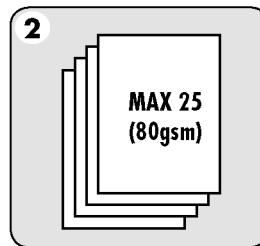


10. Switch off the machine.

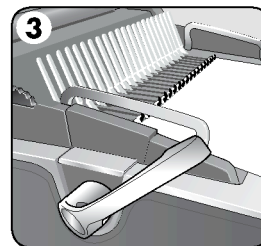
DOCUMENT BINDING



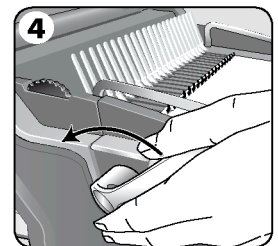
1. Punch front and back covers first.



2. Punch sheets in small batches that do not overload the machine or the user.



3. Load punched sheets directly onto the opened comb. Starting with the front of the document.

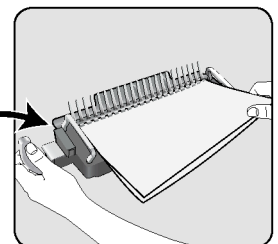
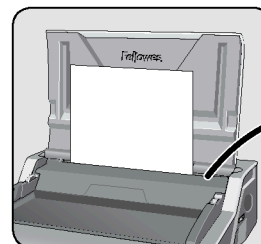


4. When all punched sheets are loaded onto the comb, push the comb lever backwards to close the comb and remove the bound document.

REMOVABLE BINDING PLATFORM

Galaxy has a unique mobile binding platform. The platform can be lifted from the base and used on a stable surface to bind documents using the normal binding procedure and also allows different users to work together. When not in use, the platform should be stored safely in the punch machine.

Satellite[®]
SYSTEM



CORRECTING A BOUND DOCUMENT

Additional sheets may be included or removed at any time by opening and then dosing the comb as previously described.

REMOVAL OF WASTE CLIPPINGS

The waste tray is located under the machine and is accessed from each side. For best results empty the tray regularly. The tray should be emptied after every 50 operations to ensure no blockages occur.

STORAGE

Lower the lid. The Galaxy comb binder is designed to be stored horizontally on the desk.

TROUBLESHOOTING

Problem	Cause	Solution
No Green power neon	Machine is not switched on	Switch on machine at rear next to plug inlet and at the socket
Red standby neon	Machine has overloaded when punching	Press the punch button. The machine will withdraw the punches and re-set itself. Continue this process until the punch cycle is complete
Punched holes are not central	Edge guide not set	Adjust edge guide until hole pattern is correct
Machine will not punch	Blockage	Check waste tray in empty. Check for blockage to paper entry
Punch holes are not parallel to edge	Debris is stuck below dies	Take stiff cardboard and slide into the paper entry. Move the cardboard sideways to release any stray clippings into the waste tray
Partial holes	Sheets not correctly aligned to punch pattern	Adjust edge guide and test punch scrap sheets until correct
Missing holes	Selectable dies are not selected to punch	Check the correct dies are selected to punch holes. To select a die, push selector switch down at the front
Sheets will not turn on the bound document	Back margin is too large for a smaller comb	Select the smaller margin depth for combs up to 18mm ($11/16''$) in diameter (2-150 sheets) Select the larger margin depth for combs larger than 18mm ($11/16''$) in diameter (151-500 sheets)
Damaged hole edges	Possibly overloading the machine	Punch plastic covers with paper sheets. Reduce number of sheets being punched
Waste tray leaks	Waste tray is not correctly inserted or 'burst feature' has activated	Check waste tray is empty and 'burst feature' is closed

WORLDWIDE WARRANTY

Fellowes warrants all parts of the binder to be free of defects in material and workmanship for 2 years from the date of purchase by the original consumer. If any part is found to be defective during warranty period, your sole and exclusive remedy will be repair or replacement, at Fellowes' option and expense, of the defective part. This warranty does not apply in cases of abuse, mishandling or unauthorised repair. Any implied warranty, including that of merchantability or fitness for particular purpose, is hereby limited in duration to the appropriate

warranty period set forth above. In no event shall Fellowes be liable for any consequential damages attributable to this product. This warranty gives you specific legal rights. You may have other legal rights that vary from this warranty. The duration, terms and conditions of this warranty are valid worldwide, except where different limitations, restrictions or conditions may be required by local law. For more details or to obtain services under this warranty, please contact Fellowes or your dealer.



Useful Phone Numbers

Help Line

Australia	+ 1-800-33-11-77
Canada	+ 1-800-665-4339
Europe	00-800-1810-1810

México	+ 1-800-234-1185
United States	+ 1-800-955-0959

Fellowes

Australia	+ 61-3-8336-9700
Benelux	+ 31-(0)-76-523-2090
Canada	+ 1-905-475-6320
Deutschland	+ 49-(0)-5131-49770
España	+ 34-91-748-05-01
France	+ 33-(0)-1-30-06-86-80
Italia	+ 39-071-730041

Japan	+ 81-(0)-3-5496-2401
Korea	+ 82-2-3462-2884
Malaysia	+ 60-(0)-35122-1231
Polska	+ 48-(0)-22-771-47-40
Singapore	+ 65-6221-3811
United Kingdom	+ 44-(0)-1302-836836
United States	+ 1-630-893-1600



1789 Norwood Avenue, Itasca, Illinois 60143-1095 • USA • 630-893-1600

fellowes.com

Australia
Benelux

Canada
China

Deutschland
España

France
Italia

Japan
Korea

Polska
Singapore

United Kingdom
United States

2007 Fellowes, Inc. Part No. 402892