



Home Comb Binder

Starlet 90



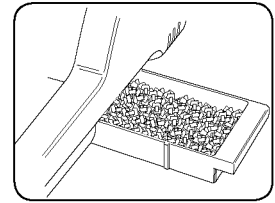
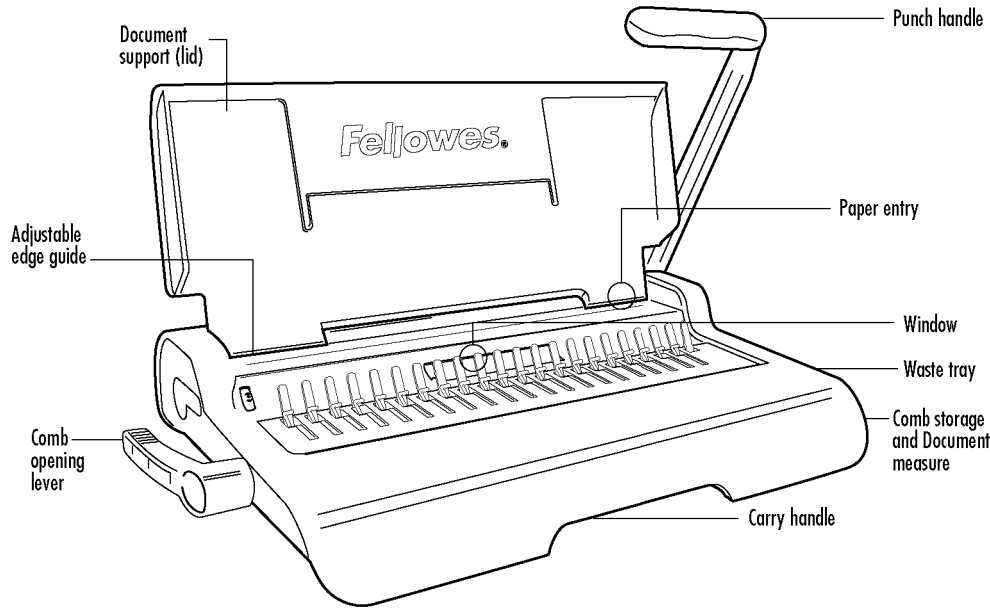
Please read these instructions before use.

Veuillez lire ces instructions avant utilisation.

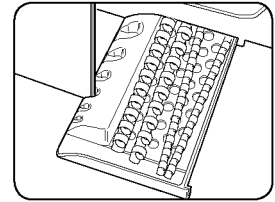
Lea estas instrucciones antes del uso.

fellowes.com

ENGLISH



Waste tray



Comb storage and Document measure

CAPABILITIES

Punching Capacity

Paper sheets	
70-80g / 20lb	7 sheets
Transparent covers	
100-200 micron / 4-8 mil	2 sheet
200+ micron / 8+ mil	1 sheet
Other standard covers	
160-270g / 40-60 lb	2 sheet
270+g / 60+ lb	1 sheet

Binding Capacity

Max comb size	1/2" (12mm)
Max document (80g / 20lb)	90 sheet

Technical Data

Paper dimensions	US letter
Punching slots	19
Slot pitch	14.28mm / 9/16"
Adjustable edge guide	yes- rotary
Waste tray capacity	c.600 sheets
Net weight	4 kg / 8.8lb
Dimensions (LxDxH)	450 x 250 x 80mm / 17.7" x 9.8" x 3.1"

IMPORTANT SAFETY INSTRUCTIONS



Read Before Using!

Please keep for future reference.

When punching;

- always ensure the machine is on a stable surface
- test punch scrap sheets and set the machine before punching final documents
- remove staples and other metal articles prior to punching
- never exceed the machines quoted performance

Need Help?

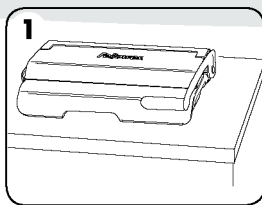
Customer Service....
www.fellowes.com
 Let our experts help you
 with a solution.
 Always call Fellowes
 before contacting
 your place of purchase.

COMB DIAMETER & DOCUMENT SIZES

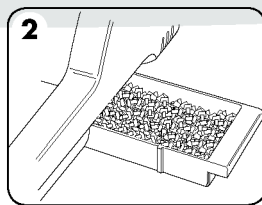
Comb diameter sizes

mm	inch	number of pages
6mm	1/4"	2-20
8mm	5/16"	21-40
10mm	3/8"	41-55
12mm	1/2"	56-90

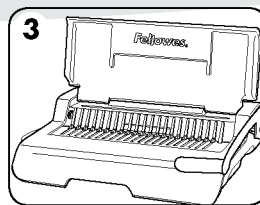
SET UP



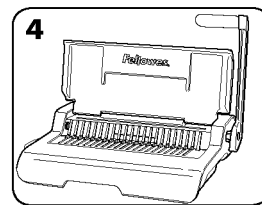
1. Ensure the machine is on a stable surface.



2. Check waste tray is empty and correctly fitted.

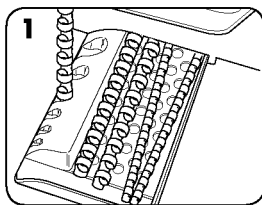


3. Lift the lid. Ensure the comb-opening lever is pushed backwards.

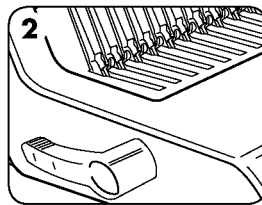


4. Lift the punch handle to its upright position.

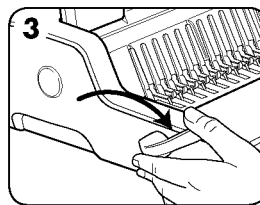
BEFORE YOU BIND



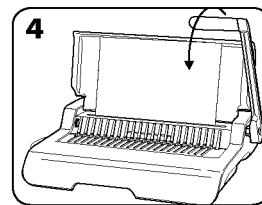
1. Select the correct comb diameter.



2. Insert the plastic comb into the mechanism.

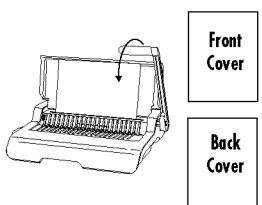


3. Pull comb-opening lever forward to open the comb.

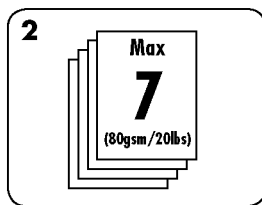


4. Test punch scrap sheets to check edge guide setting.

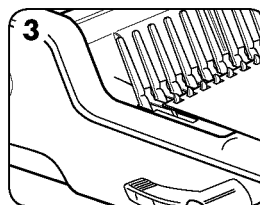
STEPS TO BIND



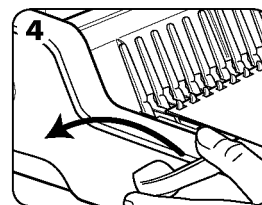
1. Punch front and back covers first.



2. Punch sheets in small batches that do not overload the machine or the user.



3. Load punched sheets directly onto the opened comb. Starting with the front of the document.



4. When all punched sheets are loaded onto the comb, push the comb lever backwards to close the comb and remove the bound document.

CORRECTING A BOUND DOCUMENT

Additional sheets may be included or removed at any time by opening and then closing the comb as previously described.

REMOVAL OF WASTE CLIPPINGS

The waste tray is located under the machine and is accessed from the right side. For best results empty the tray regularly.

STORAGE

Lower the punch handle to the horizontal position. Lower the lid. The Starlet comb binder is designed to be stored horizontally or vertically. There are feet that enable them to stand upright.

TROUBLESHOOTING

Problem	Cause	Solution
Punched holes are not central	Edge guide not set	Adjust edge guide until hole pattern is correct
Machine will not punch	Blockage	Check waste tray is empty. Check for blockage to paper entry.
Punch holes are not parallel to edge.	Debris is stuck below dies.	Take stiff cardboard and slide into the paper entry. Move the cardboard sideways to release any stray clippings into the waste tray.
Partial holes	Sheets not correctly aligned to punch pattern.	Adjust edge guide and test punch scrap sheets until correct
Damaged hole edges	Possibly overloading the machine	Punch plastic covers with paper sheets. Reduce number of sheets being punched.
Waste tray leaks	Waste tray is not correctly inserted or 'burst feature' has activated	Check waste tray is empty and 'burst feature' is closed.

WARRANTY

Fellowes warrants all parts of the binder to be free of defects in material and workmanship for 2 years from the date of purchase by the original consumer. If any part is found to be defective during warranty period, your sole and exclusive remedy will be repair or replacement, at Fellowes' option and expense, of the defective part. This warranty does not apply in cases of abuse, mishandling or unauthorised repair. Any implied warranty, including that of merchantability or fitness for particular purpose, is hereby limited in duration to the appropriate warranty period set

forth above. In no event shall Fellowes be liable for any consequential damages attributable to this product. This warranty gives you specific legal rights. You may have other legal rights that vary from this warranty. The duration, terms and conditions of this warranty are valid worldwide, except where different limitations, restrictions or conditions may be required by local law. For more details or to obtain services under this warranty, please contact Fellowes or your dealer.



Useful Phone Numbers

Help Line

Australia	+ 1-800-33-11-77
Canada	+ 1-800-665-4339
Europe	00-800-1810-1810

Fellowes

Australia	+ 61-3-8336-9700
Benelux	+ 31-(0)-76-523-2090
Canada	+ 1-905-475-6320
Deutschland	+ 49-(0)-5131-49770
España	+ 34-91-748-05-01
France	+ 33-(0)-1-30-06-86-80
Italia	+ 39-071-730041

México	+ 1-800-234-1185
United States	+ 1-800-955-0959

Japan	+ 81-(0)-3-5496-2401
Korea	+ 82-2-3462-2884
Malaysia	+ 60-(0)-35122-1231
Polska	+ 48-(0)-22-771-47-40
Singapore	+ 65-6221-3811
United Kingdom	+ 44-(0)-1302-836836
United States	+ 1-630-893-1600



1789 Norwood Avenue, Itasca, Illinois 60143-1095 • USA • 630-893-1600

fellowes.com

Australia
Benelux

Canada
China

Deutschland
España

France
Italia

Japan
Korea

Polska
Singapore

United Kingdom
United States